



概述 General

1. BTF系列全自动分体式燃烧器的功率范围为600~22000kW，在对应的燃烧功率、锅炉背压和不同燃料的情况下可选配适当的鼓风机型号。所配置的程序控制器和火焰探测器都带24小时火焰信号自检功能。
2. 全自动的燃气燃烧器特别为高调节比而设计，因此这些BTF系列燃烧器的控制范围很广泛。
3. 燃气喷头由多个喷嘴环形均匀分布在中心配风器的外围，与主助燃空气成夹角相交，达到空气与燃气的充分混合，降低NO_x的排放。
4. 钢制全密封外壳，打开上盖板可对内部组件进行维修。

5.多种控制方式，标准配置为机械比例，但可为不同操作上的需求而设，如电子比例带氧量控制器，电子比例控制双燃料燃烧等系统。

1. The power range of BTF series full-automatic separated type burner is 600-22000KW, it can be equipped with the suitable fan according to the combustion power, boiler back pressure and different fuel. Both the program controller and flame detector have 24-hour self detection of flame signal.
2. The full-automatic gas burners are specially designed for the supremely accurate adjusting ratio, therefore, BTF series burner has wide range in the control.
3. Gas sprayer head makes across angle with main combustion-supporting air, formed by several equally distributed nozzles on the periphery of central air diffuser. In order to make the intensive mixing by air and gas. And decies discharges of NO_x.
4. It shows the steel-made full-seal enclosure, only opening the top cover, the inner components can be maintained.

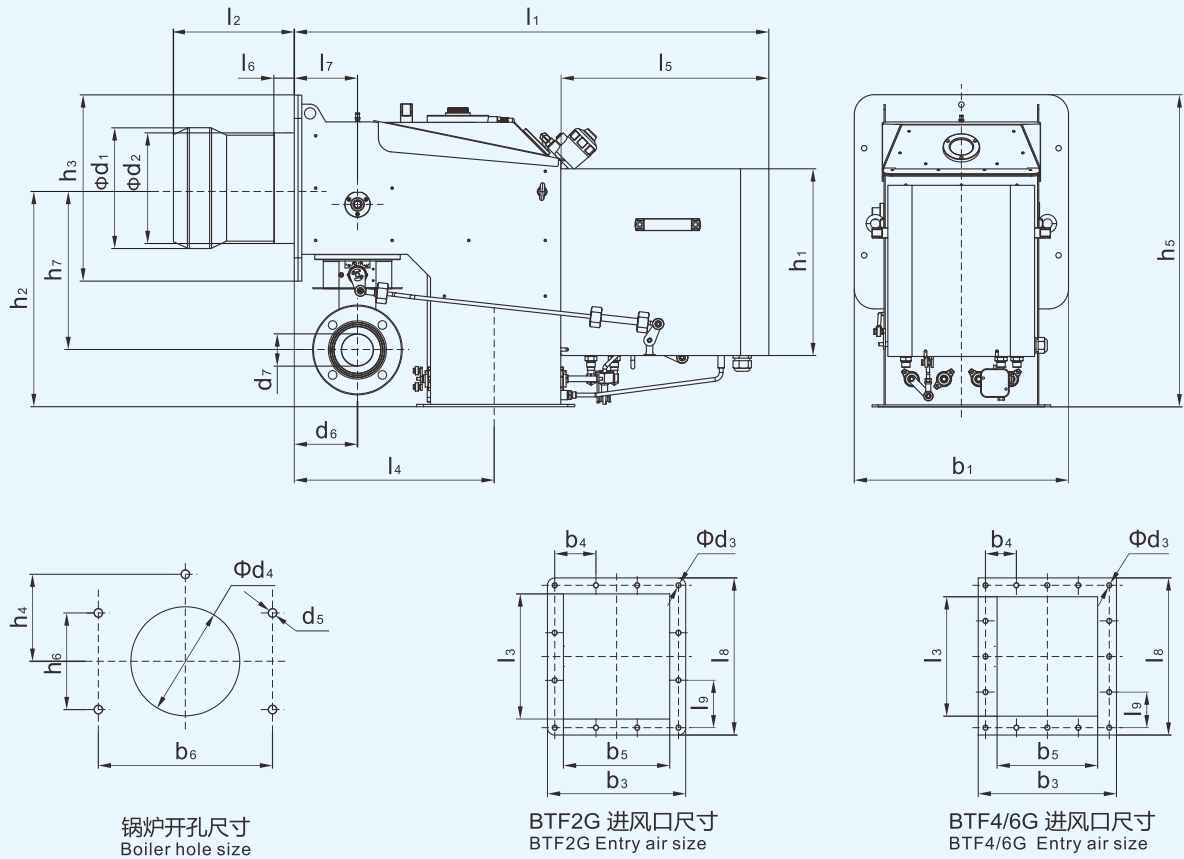
5. There are kinds of control modes, the standard configuration is the mechanical scale, however, it can be set according to the different operation demands, for instance, the electronic-scale oxygen controller, electronic-scale control dual-fuel combustion system, etc...

技术参数 Technology Data

功率 Power kW	型号 Model	订货编号 Order No.	电源 Power supply	燃气量 Gas Nm ³ /h	包装尺寸 Packing size cm	重量 Net weight kg
600~2450	BTF2G	202 25 100	380V 50Hz	60~247	1408x718x899	
900~4100	BTF4G	202 25 101	380V 50Hz	91~414	1668x678x1019	
1100~5700	BTF6G	202 25 102	380V 50Hz	111~576	1668x678x1019	
1100~7100	BTF8G	202 25 103	380V 50Hz	111~717	2090x880x1250	
1400~9600	BTF10G	202 25 104	380V 50Hz	141~970	2090x880x1250	
1400~12000	BTF12G	202 25 105	380V 50Hz	141~1212	2560x1220x1430	
2500~14000	BTF15G	202 25 106	380V 50Hz	252~1414	2560x1220x1430	
3550~17500	BTF20G	202 25 107	380V 50Hz	358~1767	2610x1360x1570	
3800~22000	BTF25G	202 25 108	380V 50Hz	384~2222	2610x1360x1570	

外形尺寸图 Outline size diagram

型号Model: BTF2G...6G



单位Unit: mm

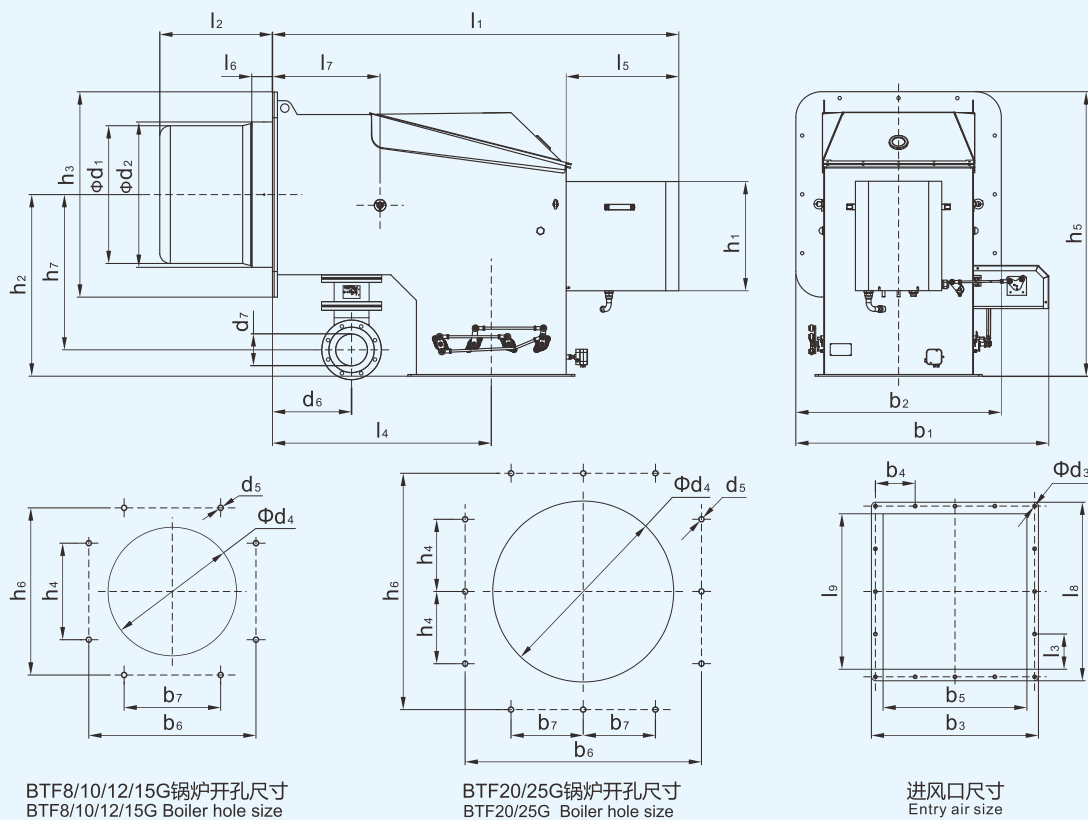
型号Model	l_1	l_2	l_3	l_4	l_5	l_6	l_7	l_8	l_9	h_1	h_2	h_3	h_4	h_5	h_6
BTF2G	1020.5	260	264	433	447.5	44	136	380	3-116.7	401.5	470	400	180	670	200
BTF4G	1174.5	336	334	545	447.5	62	203	450	4-105	431.5	517	540	245	787	270
BTF6G	1174.5	346	334	545	447.5	62	203	450	4-105	431.5	517	540	245	787	270

单位Unit: mm

型号Model	h_7	b_1	b_3	b_4	b_5	b_6	Φd_1	Φd_2	Φd_3	Φd_4	d_5	d_6	d_7
BTF2G	360	400	340	3-103.3	224	360	260	238	12- $\Phi 8.5$	270	5-M12	136	DN65
BTF4G	432	540	424	4-98.5	308	490	300	335	16- $\Phi 8.5$	375	5-M12	157	DN80
BTF6G	432	540	424	4-98.5	308	490	365	335	16- $\Phi 8.5$	375	5-M12	157	DN80

外形尺寸图 Outline size diagram

型号Model : BTF8G...25G



BTF8/10/12/15G 锅炉开孔尺寸
BTF8/10/12/15G Boiler hole size

BTF20/25G 锅炉开孔尺寸
BTF20/25G Boiler hole size

进风口尺寸
Entry air size

单位Unit: mm

型号Model	l_1	l_2	l_3	l_4	l_5	l_6	l_7	l_8	l_9	h_1	h_2	h_3	h_4	h_5	h_6
BTF8G	1489.5	415	434	760	526.5	70	320	568	4-134.5	511.5	650	700	367.5	1000	636.5
BTF10G	1489.5	415	434	760	526.5	70	320	568	4-134.5	511.5	650	700	367.5	1000	636.5
BTF12G	1827.5	555	532	1023	526.5	67	523	680	4-162.5	511.5	700	780	400	1090	693
BTF15G	1827.5	555	532	1023	526.5	67	523	680	4-163.5	511.5	700	780	400	1090	693
BTF20G	1899.5	527	632	1023	526.5	97	503	780	5-150	511.5	850	960	2-275	1330	900
BTF25G	1899.5	527	632	1023	526.5	97	503	780	5-150	511.5	850	960	2-275	1330	900

单位Unit: mm

型号Model	h_7	b_1	b_2	b_3	b_4	b_5	b_6	b_7	Φd_1	Φd_2	Φd_3	Φd_4	d_5	d_6	d_7
BTF8G	335.5	-	700	486	3-152	352	636.5	367.5	480	459	14- $\Phi 8.5$	490	8-M12	545	DN100
BTF10G	335.5	-	700	486	3-152	352	636.5	367.5	480	459	14- $\Phi 8.5$	490	8-M12	545	DN100
BTF12G	447	1042	-	636	4-151.5	488	693	400	600	562	16- $\Phi 8.5$	610	8-M16	656	DN125
BTF15G	447	1042	-	636	4-151.5	488	693	400	600	562	16- $\Phi 8.5$	610	8-M16	656	DN125
BTF20G	522	1182	-	780	5-150	632	900	2-275	645	681	20- $\Phi 8.5$	690	12-M14	575	DN150
BTF25G	522	1182	-	780	5-150	632	900	2-275	645	681	20- $\Phi 8.5$	690	12-M14	575	DN150