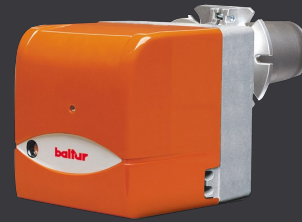


Burners

CODE 35665410

**BTL 26 P 60HZ**



Diesel burner. Two-stage operation

Regulating combustion air and blast-pipe.

Combustion air intake with throttle damper. Air flow adjustment with electric servomotor.

Maintenance facilitated by the possibility of removing the combustion head without having to remove the burner from the boiler.

Sliding boiler coupling flange to adapt the blast-pipe to the various types of boilers.

Device made of sound-absorbing material to reduce fan noise.

Sound-proof plastic protective cover.

Fuel supply circuit made of gear pump with pressure adjustment and shut-off valves

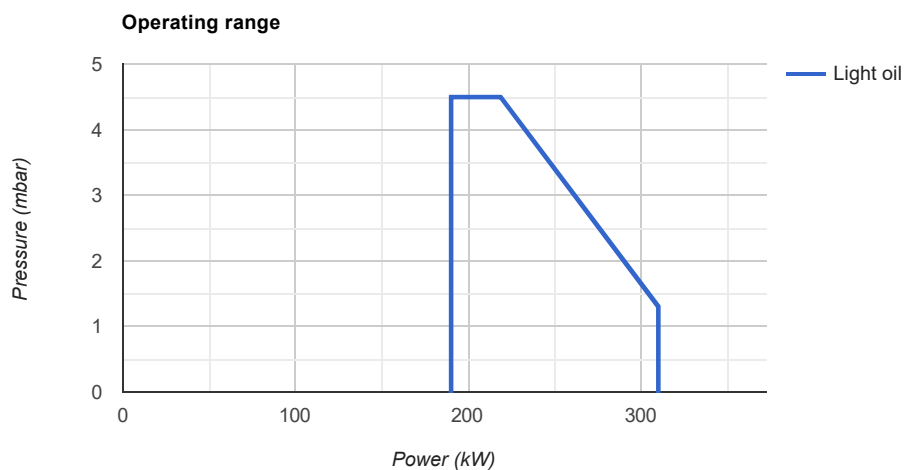
Flame detection by photoresistance.

7-pole socket for burner electric and thermostatic supply.

4-pole socket for second stage control.

Electric protection rating:

## Operating range



## Technical data

|                          |   |
|--------------------------|---|
| Tipo articolo            | Diesel burner. Two-stage operation  |
| Regolazione aria e testa | Regulating combustion air and blast-pipe.   |
| Regolazione aria         | Combustion air intake with throttle damper. Air flow adjustment with electric servomotor. |
| Fuel                     | Gasolio   |
| Operation                | Bistadio  |

|                                    |   |
|------------------------------------|---|
| Minimum Thermal Power (kW) to ErP  | 190   |
| Maximum Thermal Power (kW) to ErP  | 310   |
| Min flow rate (Sm <sup>3</sup> /H) | 16  |
| Max flow rate (Sm <sup>3</sup> /H) | 26.1  |
| Manutenzione facilitata            | Maintenance facilitated by the possibility of removing the combustion head without having to remove the burner from the boiler. |
| Max Viscosity (°E)                 | 1.5   |
| Flangia                            | Sliding boiler coupling flange to adapt the blast-pipe to the various types of boilers.   |
| Antirumore                         | Device made of sound-absorbing material to reduce fan noise.  |
| Coperchio                          | Sound-proof plastic protective cover.   |
| Circuito combustibile              | Fuel supply circuit made of gear pump with pressure adjustment and shut-off valves  |
| Controllo fiamma                   | Flame detection by photoresistance.   |
|                                    | 7-pole socket for burner electric and thermostatic supply.  |
| Presa 4 poli                       | 4-pole socket for second stage control.   |
| Protezione elettrica               | Electric protection rating:   |
| Electric power supply type         | AC  |
| No. of Phases                      | 1N  |
| Power Supply Voltage (V)           | 220   |
| Power Supply Frequency (Hz)        | 60  |
| Fan Motor Power (kW)               | 0.25  |
| Weight without packaging (kg)      | 17  |
| Weight with packaging (kg)         | 18  |
| Width (mm)                         | 780   |
| Depth (mm)                         | 370   |
| Height (mm)                        | 410   |