



# CATALOG SIGHT GLASS

**PT. INDIRA MITRA BOILER**

*Expert In Industrial Energy*

021-59375021 | [info@burnerstock.co.id](mailto:info@burnerstock.co.id)

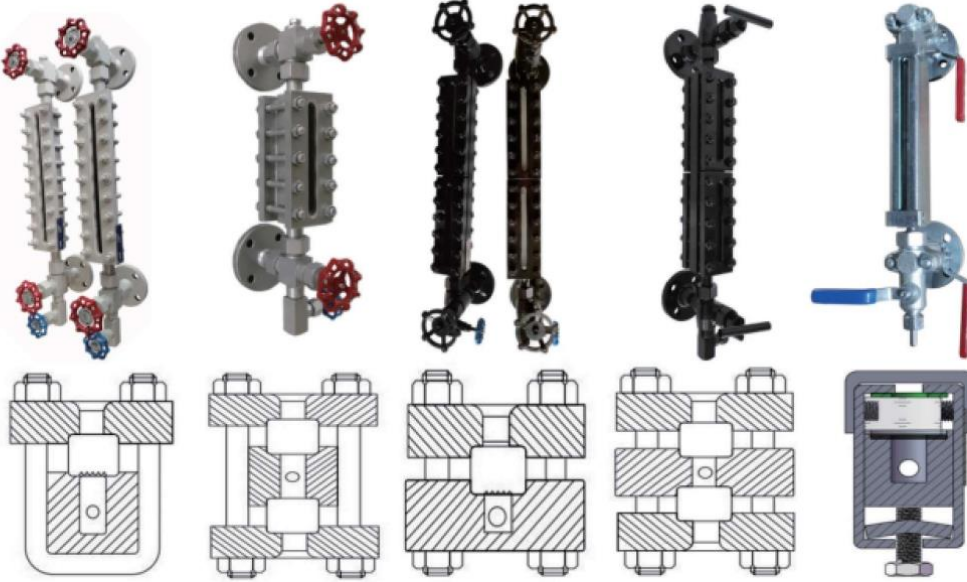
Jl. Love brid blok D19 no 21, permata  
sepatan pisang jaya, sepatan, kabupaten  
tangerang 15520

**RATMAN**  
[[info@indira.co.id](mailto:info@indira.co.id)]

## PT. Indira Mitra Boiler

structure is more resistant to pressure than the reflex liquid level gauge.

### Pictures and description of different models



TBS-F

TBS-A

UI-CV-F-HF

UI-CV-F-HT

RFL-40C

## Glass Size



Unit: mm

No.	B1	A1	B2	A2	B3	A3	B4	A4	B5	A5	B6	A6	B7	A7	B8	A8	B9	A9
Length	115		140		165		190		220		250		280		320		340	
Width	34	30	34	30	34	30	34	30	34	30	34	30	34	30	34	30	34	30
Thickness	17		17		17		17		17		17		17		17		17	

## Main technical parameters

Model	TBS-F	TBS-A	UI-CV-F-HF	UI-CV-F-HT	RFL-40C
Type	Reflex	Transparent	High pressure reflex	High pressure Transparent	90 degree Quick open/close
C-C (mm)	300-3600				285-2590
Visible Length (mm)	95-3360				141-2433
Gauge Material	CS、SS304、SS316L、Ti、 etc				Cast steel
Glass Size	A1-A9, B1-B9				A1-A9
Glass Material	Borosilicate; Alumina-silicate				
Gasket Type	Graphite composite gasket; non-Asbestos gasket; Mica seal components				
suitable temperature	≤450℃				
Working pressure (Bar)	40 (Groove glass) 100 (Plate glass)	100 (Plate glass)	40 (Groove glass) 160 (Plate glass)	160 (Plate glass)	40 (Groove glass)

## Gauge Valve main technical parameters



**UI-CV-F offset valve**

**UI-CV-S straight**

**RFL-40 Quick close**

Suitable tube diameter:  $\phi$  18mm,  $\phi$  16mm

Model	UI-CV-F	UI-CV-S	RFL-40
Type	Offset Valve 360° turn	Straight Gauge Valve 360° turn	90° Quick Open / Close Gauge Valve
Valve body	Forging steel	CS, SS304, SS316L, Ti	Cast steel
Valve rod Material	2Cr13 / SS316L		
Sealing Material	Graphite		
Working temperature	$\leq 450^{\circ}\text{C}$		
Working pressure (Bar)	40 (Groove glass) 160 (Plate glass)	40 (Groove glass) 100 (Plate glass)	40 (Groove glass)
Connection mode	Flange; Thread; welding		Flange: DN15 DN20 DN25, 3/4" 1" 1-1/4"
Connection standard	ANSI, DIN, GB, JIS; NPT, BSPT, G, ZG;		ANSI, DIN, GB, JIS;
Apply to	TBS-F / TBS-A / TBS-HR / TBS-HT / RFL-40C		TBS-F / TBS-A / RFL-40C

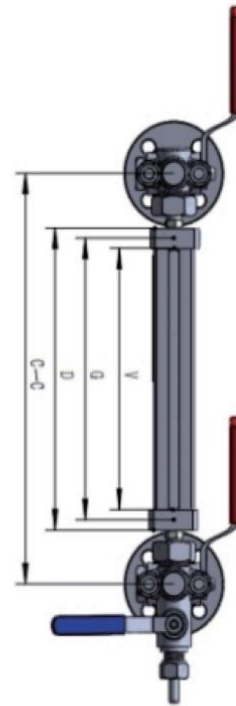
## Brass Gauge Valve for glass tube

		
1/2" BSP suitable for glass tube OD15mm 3/4" BSP suitable for glass tube OD18mm Net weight: 2.1 kg	1/2" BSP suitable for glass tube OD15mm, weight: 520g/set Size: 3/4" BSP suitable for glass tube OD15mm, weight: 550g/set	G1/2" tube size: OD13mm 270g/set G3/4" tube size: OD18mm 285g/set

Model: RFL-40C Reflex Level Gauge			
Pressure	<4MPa	Temperature	<250 C, <450 C
Material	Carbon Steel	Flange	DN15 DN20 DN25, 3/4" 1" 1-1/4"



Model	Min C-C	Body D	visible length V(+2/0)	Glass length G	section	blind part
11	235	128	91	115	1	144
12	260	153	116	140	1	144
13	285	178	141	165	1	144
14	310	203	166	190	1	144
15	340	233	196	220	1	144
16	370	263	226	250	1	144
17	400	293	256	280	1	144
18	440	333	296	320	1	144
19	460	353	313	340	1	147
24	515	406	367	190	2	148
25	575	466	427	220	2	148
26	635	526	489	250	2	146
27	695	586	549	280	2	146
28	775	666	628	320	2	147
29	815	706	668	340	2	147
36	900	789	751	250	3	149
37	990	879	841	280	3	149
38	1110	999	961	320	3	149
39	1170	1059	1021	340	3	149
47	1285	1172	1134	280	4	151
48	1445	1332	1294	320	4	151
49	1525	1412	1374	340	4	151
57	1580	1465	1427	280	5	153
58	1780	1665	1627	320	5	153
59	1880	1765	1727	340	5	153
68	2115	1998	1960	320	6	155
69	2235	2118	2080	340	6	155
79	2590	2471	2433	340	7	157



Model: RFL-40FC Reflex Level Gauge			
Pressure	<4MPa	Temperature	<250 C, <450 C
Material	Carbon Steel	Flange	DN15 DN20 DN25, 3/4" 1" 1-1/4"



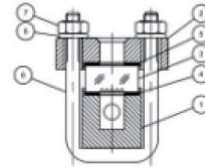
Model	Min C-C	Body D	Visible length V(+2/0)	Glass length G	section	Blind part
11	235	128	91	115	1	144
12	260	153	116	140	1	144
13	285	178	141	165	1	144
14	310	203	166	190	1	144
15	340	233	196	220	1	144
16	370	263	226	250	1	144
17	400	293	256	280	1	144
18	440	333	296	320	1	144
19	460	353	313	340	1	147
24	515	406	367	190	2	148
25	575	466	427	220	2	148
26	635	526	489	250	2	146
27	695	586	549	280	2	146
28	775	666	628	320	2	147
29	815	706	668	340	2	147
36	900	789	751	250	3	149
37	990	879	841	280	3	149
38	1110	999	961	320	3	149
39	1170	1059	1021	340	3	149
47	1285	1172	1134	280	4	151
48	1445	1332	1294	320	4	151
49	1525	1412	1374	340	4	151
57	1580	1465	1427	280	5	153
58	1780	1665	1627	320	5	153
59	1880	1765	1727	340	5	153
68	2115	1998	1960	320	6	155
69	2235	2118	2080	340	6	155
79	2590	2471	2433	340	7	157

Model: RFL-40HFC Reflex Level Gauge			
Pressure	<4MPa	Temperature	<250 C, <450 C
Material	Carbon Steel	Flange	DN15 DN20 DN25, 3/4" 1" 1-1/4"

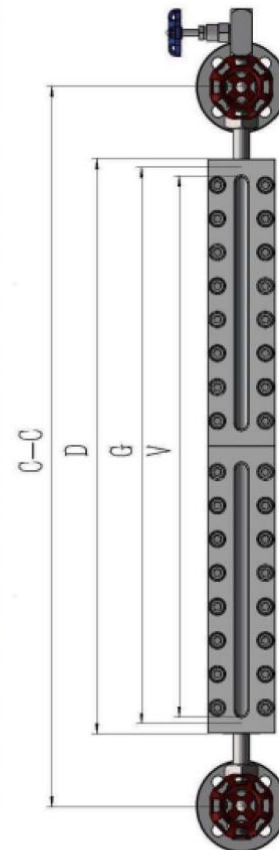


Model	Min C-C	Body D	Visible length V(+2/0)	Glass length G	section	Blind part
11	235	128	91	115	1	144
12	260	153	116	140	1	144
13	285	178	141	165	1	144
14	310	203	166	190	1	144
15	340	233	196	220	1	144
16	370	263	226	250	1	144
17	400	293	256	280	1	144
18	440	333	296	320	1	144
19	460	353	313	340	1	147
24	515	406	367	190	2	148
25	575	466	427	220	2	148
26	635	526	489	250	2	146
27	695	586	549	280	2	146
28	775	666	628	320	2	147
29	815	706	668	340	2	147
36	900	789	751	250	3	149
37	990	879	841	280	3	149
38	1110	999	961	320	3	149
39	1170	1059	1021	340	3	149
47	1285	1172	1134	280	4	151
48	1445	1332	1294	320	4	151
49	1525	1412	1374	340	4	151
57	1580	1465	1427	280	5	153
58	1780	1665	1627	320	5	153
59	1880	1765	1727	340	5	153
68	2115	1998	1960	320	6	155
69	2235	2118	2080	340	6	155
79	2590	2471	2433	340	7	157

Model: TBS-F Reflex Level Gauge			
Pressure	<4MPa	Temperature	<250 C, <450 C
Material	Carbon Steel, stainless steel	Flange	DN15 DN20 DN25, DN40, DN50, 3/4", 1", 1-1/4", 1.5", 2"

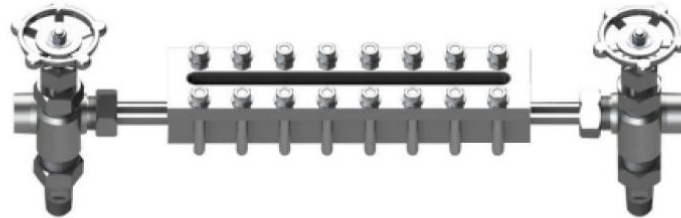


Model	Min C-C	Body D	visible length V(+2/0)	Glass length G	section	blind part
L-1	239	135	95	115	1	144
L-2	264	160	120	140	1	144
L-3	289	185	145	165	1	144
L-4	314	210	170	190	1	144
L-5	344	240	200	220	1	144
L-6	374	270	230	250	1	144
L-7	404	300	260	280	1	144
L-8	444	340	300	320	1	144
L-9	464	360	320	340	1	144
L-10	524	420	380	190	2	144
L-11	584	480	440	220	2	144
L-12	644	540	500	250	2	144
L-13	704	600	560	280	2	144
L-14	784	680	640	320	2	144
L-15	824	720	680	340	2	144
L-16	914	810	770	250	3	144
L-17	1004	900	860	280	3	144
L-18	1124	1020	980	320	3	144
L-19	1184	1080	1040	340	3	144
L-20	1304	1200	1160	280	4	144
L-21	1464	1360	1320	320	4	144
L-22	1544	1440	1400	340	4	144
L-23	1604	1500	1460	280	5	144
L-24	1804	1700	1660	320	5	144
L-25	1904	1800	1760	340	5	144
L-26	2144	2040	2000	320	6	144
L-27	2264	2160	2120	340	6	144
L-28	2624	2520	2480	340	7	144

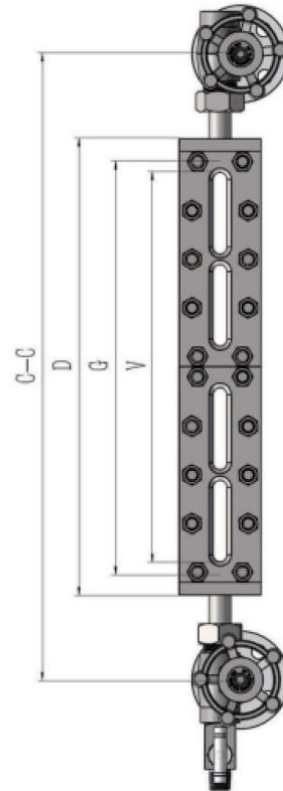




Model: UI-CV-F-LF Reflex Level Gauge			
Pressure	4MPa, 7MPa, <16MPa	Temperature	<250 C, <450 C
Material	Carbon steel, Stainless steel	Connection	DN15 DN20 DN25, DN40, DN50, 3/4", 1", 1-1/4", 1.5", 2"
glass	Borosilicate or Al-Si glass	Connection type	Flange, Screw or other



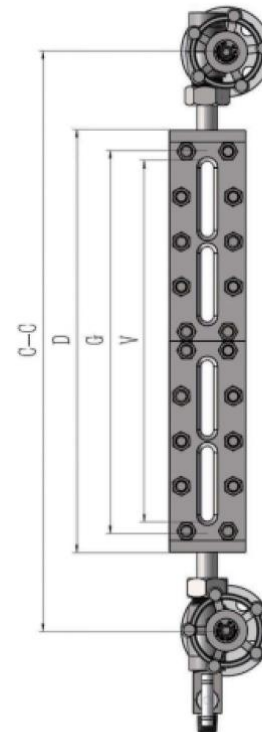
Model	Min C-C	Body D	visible Length V(+2/0)	Glass length G	section	Blind part
H-1	286	135	90	115	1	196
H-2	311	160	115	140	1	196
H-3	336	185	140	165	1	196
H-4	361	210	165	190	1	196
H-5	391	240	195	220	1	196
H-6	421	270	225	250	1	196
H-7	451	300	255	280	1	196
H-8	521	370	325	165	2	196
H-9	571	420	375	190	2	196
H-10	631	480	435	220	2	196
H-11	691	540	495	250	2	196
H-12	751	600	555	280	2	196
H-13	781	630	585	190	3	196
H-14	871	720	675	220	3	196
H-15	961	810	765	250	3	196
H-16	1051	900	855	280	3	196
H-17	1111	960	915	220	4	196
H-18	1231	1080	1035	250	4	196
H-19	1351	1200	1155	280	4	196
H-20	1351	1200	1155	220	5	196
H-21	1501	1350	1305	250	5	196
H-22	1591	1440	1395	220	6	196
H-23	1651	1500	1455	280	5	196
H-24	1771	1620	1575	250	6	196
H-25	1951	1800	1755	280	6	196
H-26	2041	1890	1845	250	7	196
H-25	2251	2100	2055	280	7	196



Model: UI-CV-F-HF Reflex Level Gauge			
Pressure	4MPa, 7MPa, <16MPa	Temperature	<250 C, <450 C
Material	Carbon steel, Stainless steel	Connection	DN15 DN20 DN25, DN40, DN50
glass	Borosilicate or Al-Si glass	Connection type	Flange, Screw or other



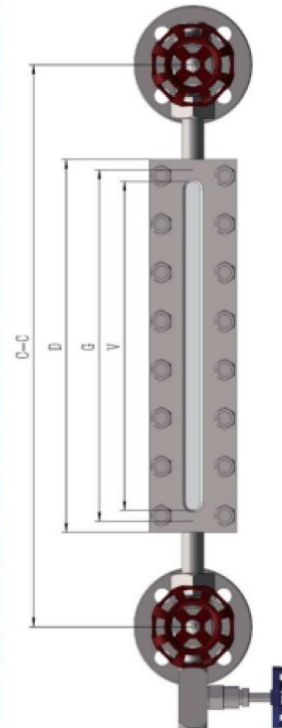
Model	Min C-C	Body D	Visible Length V(+2/0)	Glass Length G	section	Blind part
H-1	286	135	90	115	1	196
H-2	311	160	115	140	1	196
H-3	336	185	140	165	1	196
H-4	361	210	165	190	1	196
H-5	391	240	195	220	1	196
H-6	421	270	225	250	1	196
H-7	451	300	255	280	1	196
H-8	521	370	325	165	2	196
H-9	571	420	375	190	2	196
H-10	631	480	435	220	2	196
H-11	691	540	495	250	2	196
H-12	751	600	555	280	2	196
H-13	781	630	585	190	3	196
H-14	871	720	675	220	3	196
H-15	961	810	765	250	3	196
H-16	1051	900	855	280	3	196
H-17	1111	960	915	220	4	196
H-18	1231	1080	1035	250	4	196
H-19	1351	1200	1155	280	4	196
H-20	1351	1200	1155	220	5	196
H-21	1501	1350	1305	250	5	196
H-22	1591	1440	1395	220	6	196
H-23	1651	1500	1455	280	5	196
H-24	1771	1620	1575	250	6	196
H-25	1951	1800	1755	280	6	196
H-26	2041	1890	1845	250	7	196
H-25	2251	2100	2055	280	7	196



Model: TBS-A Transparent Level Gauge			
Pressure	<7MPa, <16MPa	Temperature	<250 C, <450 C
Material	Carbon steel, Stainless steel	Flange	DN15 DN20 DN25, DN40, DN50, 3/4", 1", 1-1/4", 1.5", 2"



Model	Min C-C	Body D	visible length V(+2/0)	Glass length G	section	blind part
M-1	273	135	95	115	1	178
M-2	298	160	120	140	1	178
M-3	323	185	145	165	1	178
M-4	348	210	170	190	1	178
M-5	378	240	200	220	1	178
M-6	408	270	230	250	1	178
M-7	438	300	260	280	1	178
M-8	478	340	300	320	1	178
M-9	498	360	320	340	1	178
M-10	558	420	380	190	2	178
M-11	618	480	440	220	2	178
M-12	678	540	500	250	2	178
M-13	738	600	560	280	2	178
M-14	818	680	640	320	2	178
M-15	858	720	680	340	2	178
M-16	948	810	770	250	3	178
M-17	1038	900	860	280	3	178
M-18	1158	1020	980	320	3	178
M-19	1218	1080	1040	340	3	178
M-20	1338	1200	1160	280	4	178
M-21	1498	1360	1320	320	4	178
M-22	1578	1440	1400	340	4	178
M-23	1638	1500	1460	280	5	178
M-24	1838	1700	1660	320	5	178
M-25	1938	1800	1760	340	5	178
M-26	2178	2040	2000	320	6	178
M-27	2298	2160	2120	340	6	178
M-28	2658	2520	2480	340	7	178



Welcome to contact us for Other size.

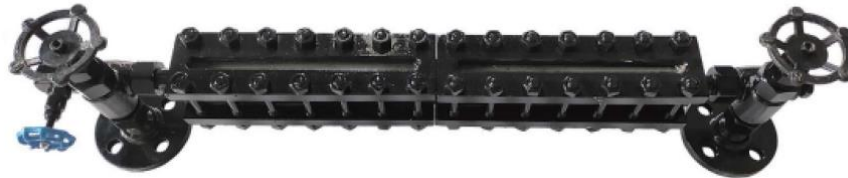
Model: RFL-40AC Transparent Level Gauge			
Pressure	<4MPa	Temperature	<250 C, <450 C
Material	Carbon Steel	Flange	DN15 DN20 DN25, 3/4" 1" 1-1/4"



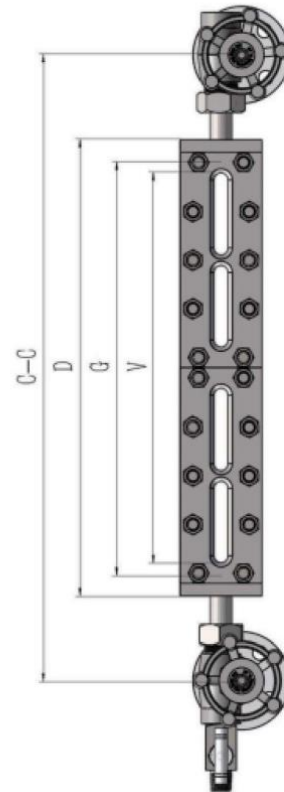
Model	Min C-C	Body D	Visible length V(+2/0)	Glass length G	section	Blind part
11	235	128	91	115	1	144
12	260	153	116	140	1	144
13	285	178	141	165	1	144
14	310	203	166	190	1	144
15	340	233	196	220	1	144
16	370	263	226	250	1	144
17	400	293	256	280	1	144
18	440	333	296	320	1	144
19	460	353	313	340	1	147
24	515	406	367	190	2	148
25	575	466	427	220	2	148
26	635	526	489	250	2	146
27	695	586	549	280	2	146
28	775	666	628	320	2	147
29	815	706	668	340	2	147
36	900	789	751	250	3	149
37	990	879	841	280	3	149
38	1110	999	961	320	3	149
39	1170	1059	1021	340	3	149
47	1285	1172	1134	280	4	151
48	1445	1332	1294	320	4	151
49	1525	1412	1374	340	4	151
57	1580	1465	1427	280	5	153
58	1780	1665	1627	320	5	153
59	1880	1765	1727	340	5	153
68	2115	1998	1960	320	6	155
69	2235	2118	2080	340	6	155
79	2590	2471	2433	340	7	157

Other size can be design.

Model: UI-CV-F-A Transparent Level Gauge			
Pressure	<16MPa	Temperature	<250 C, <450 C
Material	Forged steel	Flange	DN15 DN20 DN25, DN40, DN50, 3/4", 1", 1-1/4", 1.5", 2"



Model	Min C-C	Body D	visible Length V(+2/0)	Glass length G	section	Blind part
H-1	286	135	90	115	1	196
H-2	311	160	115	140	1	196
H-3	336	185	140	165	1	196
H-4	361	210	165	190	1	196
H-5	391	240	195	220	1	196
H-6	421	270	225	250	1	196
H-7	451	300	255	280	1	196
H-8	521	370	325	165	2	196
H-9	571	420	375	190	2	196
H-10	631	480	435	220	2	196
H-11	691	540	495	250	2	196
H-12	751	600	555	280	2	196
H-13	781	630	585	190	3	196
H-14	871	720	675	220	3	196
H-15	961	810	765	250	3	196
H-16	1051	900	855	280	3	196
H-17	1111	960	915	220	4	196
H-18	1231	1080	1035	250	4	196
H-19	1351	1200	1155	280	4	196
H-20	1501	1350	1305	250	5	196
H-21	1651	1500	1455	280	5	196
H-22	1771	1620	1575	250	6	196
H-23	1951	1800	1755	280	6	196
H-24	2041	1890	1845	250	7	196
H-25	2251	2100	2055	280	7	196

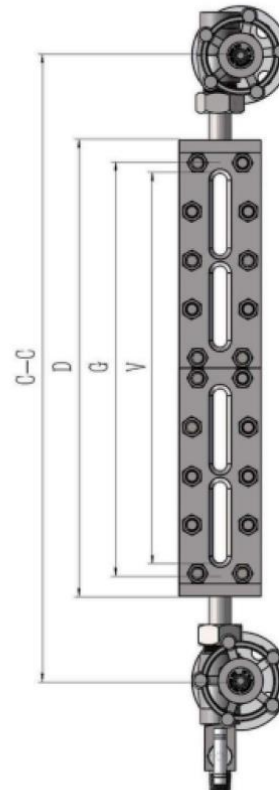


Other size can be design, too.

Model: UI-CV-F-HT Transparent Level Gauge			
Pressure	<16MPa	Temperature	<250 C, <450 C
Material	Forged steel	Flange	DN15 DN20 DN25, DN40, DN50, 3/4", 1", 1-1/4", 1.5", 2"



Model	Min C-C	Body D	visible Length V(+2/0)	Glass length G	section	Blind part
H-1	286	135	90	115	1	196
H-2	311	160	115	140	1	196
H-3	336	185	140	165	1	196
H-4	361	210	165	190	1	196
H-5	391	240	195	220	1	196
H-6	421	270	225	250	1	196
H-7	451	300	255	280	1	196
H-8	521	370	325	165	2	196
H-9	571	420	375	190	2	196
H-10	631	480	435	220	2	196
H-11	691	540	495	250	2	196
H-12	751	600	555	280	2	196
H-13	781	630	585	190	3	196
H-14	871	720	675	220	3	196
H-15	961	810	765	250	3	196
H-16	1051	900	855	280	3	196
H-17	1111	960	915	220	4	196
H-18	1231	1080	1035	250	4	196
H-19	1351	1200	1155	280	4	196
H-20	1351	1200	1155	220	5	196
H-21	1501	1350	1305	250	5	196
H-22	1591	1440	1395	220	6	196
H-23	1651	1500	1455	280	5	196
H-24	1771	1620	1575	250	6	196
H-25	1951	1800	1755	280	6	196
H-26	2041	1890	1845	250	7	196
H-25	2251	2100	2055	280	7	196



Other size can be produced on order.

### Non-blind type glass plate level gauge

<b>Pressure</b>	<16MPa	<b>Temperature</b>	<250 C, <450 C
<b>Material</b>	Forged steel	<b>Flange</b>	DN15 DN20 DN25, DN40, DN50, 3/4", 1", 1-1/4", 1.5", 2"



TBS-FW blindless Reflex Level Gauge



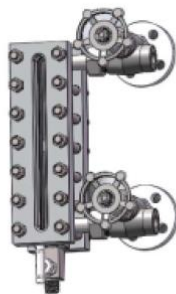
TBS-AW Transparent Level Gauge



TBS-FWH high pressure Reflex Level Gauge



CVF-TWH high pressure wide chamber transparent level gauge



CVF-TW Transparent level gauge



CVF-TW transparent level gauge

**Non-blind type glass plate level gauge dimensions refer to bellow table:**

Table of long visible type glass level gauge

Model	C-C Longer	C-C Shorter	Chamber length D	visible Length V(+2/0)	Glass length G	section
H-1	135	55	135	90	115	1
H-2	160	80	160	115	140	1
H-3	185	105	185	140	165	1
H-4	210	130	210	165	190	1
H-5	240	160	240	195	220	1
H-6	270	190	270	225	250	1
H-7	300	220	300	255	280	1
H-8	320	240	320	275	300	1
H-9	340	260	340	295	320	1
H-10	360	280	360	315	340	1
H-11	370	290	370	325	165	2
H-12	420	340	420	375	190	2
H-13	480	400	480	435	220	2
H-14	540	460	540	495	250	2
H-15	600	520	600	555	280	2
H-16	630	550	630	585	190	3
H-17	640	560	640	595	300	2
H-18	680	600	680	635	320	2
H-19	720	640	720	675	340	2
H-20	720	640	720	675	220	3
H-21	810	730	810	765	250	3
H-22	900	820	900	855	280	3
H-23	960	880	960	915	220	4
H-24	1020	940	1020	975	320	3
H-25	1080	1000	1080	1035	250	4
H-26	1200	1120	1200	1155	280	4
H-27	1280	1200	1280	1235	300	4
H-28	1350	1270	1350	1305	250	5
H-29	1360	1280	1360	1315	320	4
H-30	1440	1360	1440	1395	340	4
H-31	1500	1420	1500	1455	280	5
H-32	1620	1540	1620	1575	250	6
H-33	1800	1720	1800	1755	280	6
H-34	1890	1810	1890	1845	250	7
H-35	2100	2020	2100	2055	280	7



## B69H-16 mica sheet Two Color high pressure Level Gauge

For monitoring the water level of power plant boiler drum of thermal power generating set.

- Center to center distance: on order
- Nominal pressure: 16-32MP
- working temperature: saturated steam
- Connection size: OD28x4mm welding or made on needs
- **Red for air, and green for water**
- Lamp type: LED with power: 220VAC
- A with two line glass window, no interrupt zone for level view.  
 B With one line glass window, have interrupt zone.



## B49H-1.6 Economy type two color glass Level Gauge

Model	B49H-25		
Name	Bi-color Flat glass level gauge		
PN	1.6~4.0(MPa)		
DN	25(mm)		
C-C	300~440(mm)		
Temp.	≤250℃		
Material	Carbon steel		
Lamp	power AC 36V+/-4V		
Nominal diameter	1.60MPa	2.50MPa	4.00MPa
Test Pressure	2.45	3.80MPa	6MPa
Visible length	165~195mm		
Center to Center	300, 330, 350, 400 (mm)		
Indicator color	Red for Liquid, green for air		
View angle	20°		
View distance	< 60m		



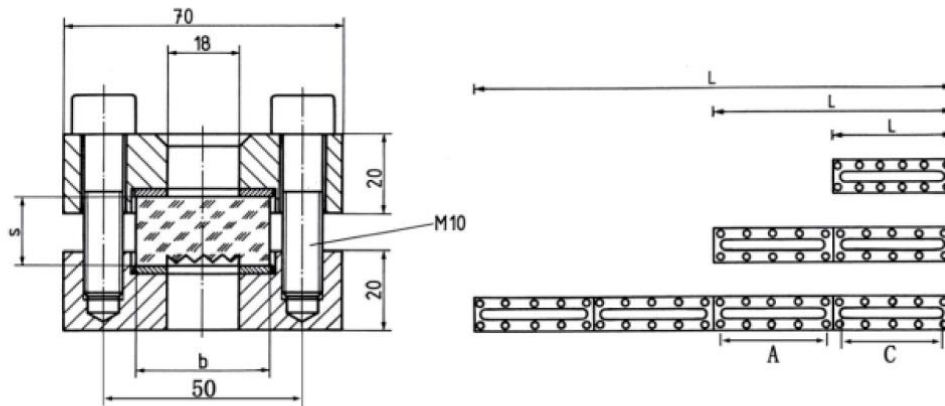
## HG5-1370-80 Lumiglas Sight Glass Fitting Rectangular

The base flange of the sight glass unit is welded into or onto the vessel wall; the glass plate with gasket either side is firmly held in place by bolted on cover flange.

- 1) Suitable pressure: 0.6MPa, 1.6Mpa or other
- 2) Working temperature:  $\leq 250^{\circ}\text{C}$
- 3) Material: Carbon steel, Stainless steel, Titanium or other



• Dimensions of Lumiglas sight glass fitting rectangular:



size		1	2	3	4	5	6	7	8	9	10	11	12	13
fitting	L	170	195	210	250	300	350	400	440	500	600	700	800	1000
sight glass plate *	section	1	1	1	1	1	1	1	2	2	2	2	2	4
	Glass	140	165	190	220	280	320	370	190	220	280	320	370	220
Width*thick =34*17	C	124	149	174	204	264	304	354	174*2	204*2	264*2	304*2	354*2	204*4
	Bolt qty	8	10	10	12	14	16	18	20	24	28	32	36	40

Standard is reflex glass. Transparent type glass is optional when needs.

## Other Sight glasses



### Contact Us

#### **PT Indira Mitra Boiler (Head Office)**

Lovebird Street D19/21 RT12 RW05 Permata Sepatan, Pisangan Jaya, Sepatan, Tangerang, Banten 15520 INDONESIA  
021 59375021

[info@burnerstock.co.id](mailto:info@burnerstock.co.id)

#### **PT Indira Mitra Boiler (Workshop)**

Laksana Business Park Blok F/09, Laksana, Pakuhaji, Tangerang, Banten, 15570 INDONESIA